

# MONTHLY MEMBERSHIP PROGRESS REPORT

LOCATION NIGERIA

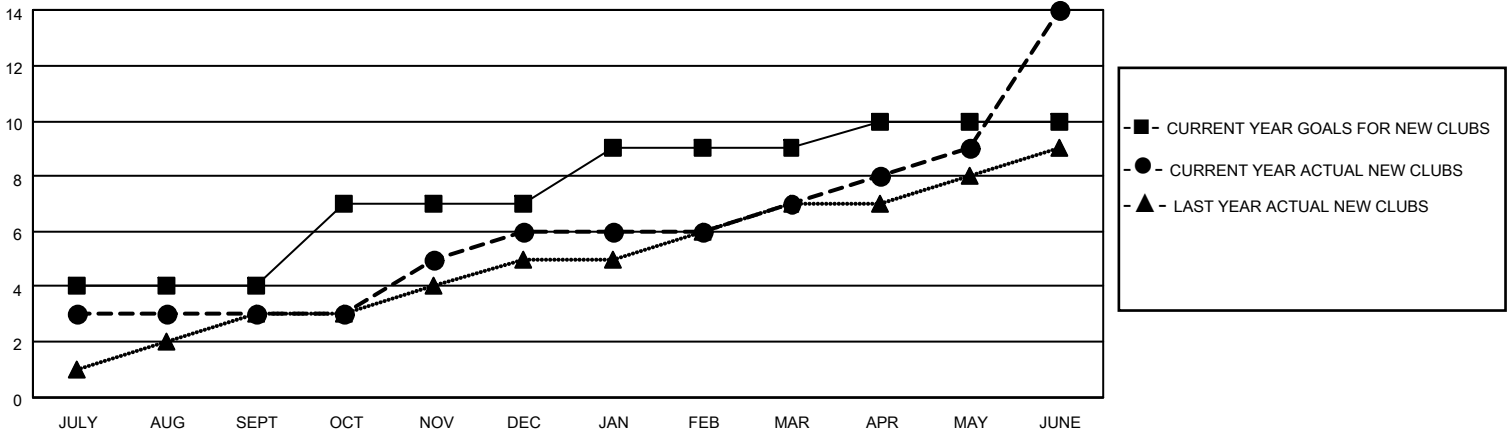
District 404 B2

Results as of: 6/30/2023

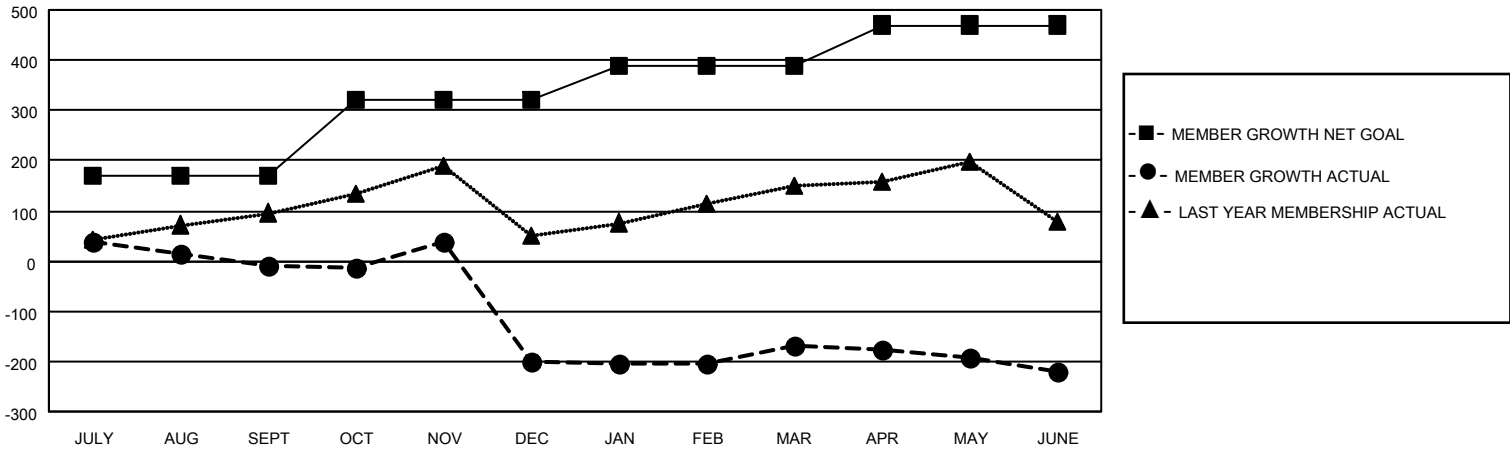
Clubs			
RESULTS FOR 2022-2023			
QUARTER	NEW CLUB GOAL	NEW CLUBS	DROPPED CLUBS
JULY/AUG/SEPT	4	3	3
OCT/NOV/DEC	3	3	10
JAN/FEB/MAR	2	1	1
APR/MAY/JUNE	1	7	4

Members			
RESULTS FOR 2022-2023			
QUARTER	MEMBER GROWTH NET GOAL	MEMBER GROWTH ACTUAL	DROPPED MEMBERS ACTUAL (including transfers)
JULY/AUG/SEPT	170	122	119
OCT/NOV/DEC	150	166	346
JAN/FEB/MAR	70	152	91
APR/MAY/JUNE	80	324	320

**GOALS AND ACTUAL NEW CLUBS CUMULATIVE**



**GOALS AND ACTUAL MEMBERS CUMULATIVE**



**DROPPED CLUBS: 17**

**74 CLUBS OF 99 ADDED 1 OR MORE NEW MEMBERS**

**GENDER DISTRIBUTION**

MALE	1,201 (55.63%)
FEMALE	958 (44.37%)
NON BINARY	0 (0.00%)
PREFER NOT TO ANSWER	0 (0.00%)

**DROPPED MEMBERS**

[CLICK HERE FOR CUMULATIVE MEMBERSHIP DATA](#)

DECEASED	13
CLUB CANCELLED	297
OTHER	569
<b>TOTAL</b>	<b>879</b>

TOTAL FAMILY UNIT MEMBERS 239

FAMILY MEMBERS PAYING HALF DUES 131